



	Load Radius (ft)	Boom Length (ft)	Jib Length (ft)	Jib Offset (°)		
Crane:	70.0	105.0	32.0	30.0	Load Weight:	3,000
Chart:	70.0	105.0	32.0	30.0	Capacity (lb):	6,000

Gatwood Crane Service

08-31-2012

Elevation View: Terex T340 XL

Hook Height: 71.0 (ft)

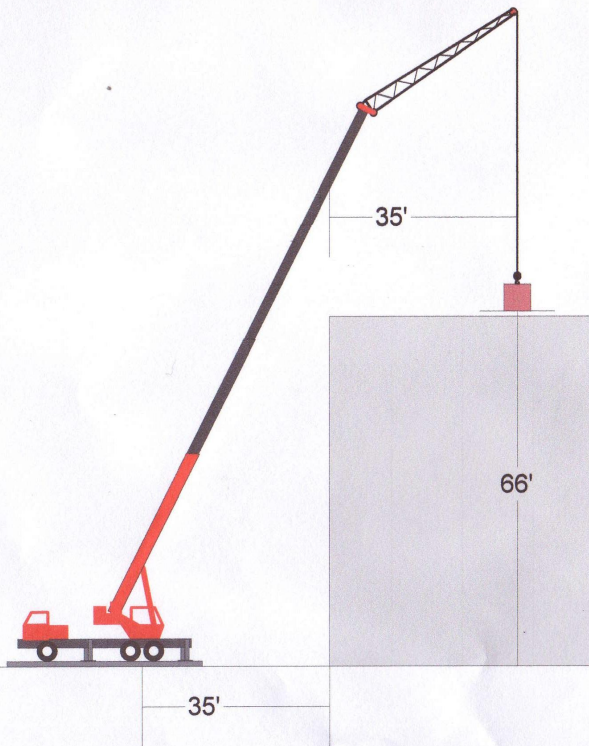
Tip Height: 122.7 (ft)

Counterweight: Full

% of Chart Capacity: 50% (100% Limit)

Original Load Weight: 3,000.0 (lb)

Terex T340 XL - 105' Main Boom + 32' Jib, 100% Outriggers, Full Cwt + 1350# F. Bumper Cwt, 360 Deg, 85% Cap, []



Compu-Crane's CSPS
<http://compucrane.manitowoc.com>